

04 | ADSS 光缆悬垂线夹

Preformed Suspension Set for ADSS

ADSS 光缆悬垂线夹用于光缆在直线杆塔上的悬挂和支撑。线夹用于传递轴向载荷，并分散径向压应力,对光缆起到良好的保护作用，避免光缆产生过小的弯曲半径和应力集中的异常情况发生。线夹握力大于光缆额定抗拉强度的18%,具有优异的抗疲劳性，并对ADSS 光缆起到辅助减振的作用。

ADSS 光缆悬垂线夹根据线路跨距大小分切线线夹、单层预绞丝切线线夹、单悬垂线夹和双悬垂线夹等几种。

ADSS 光缆用切线线夹和单层预绞丝切线线夹 (Tangent and Single layer Preformed Rods Suspension set for ADSS)

产品用途及特点 (Usage and characteristics)

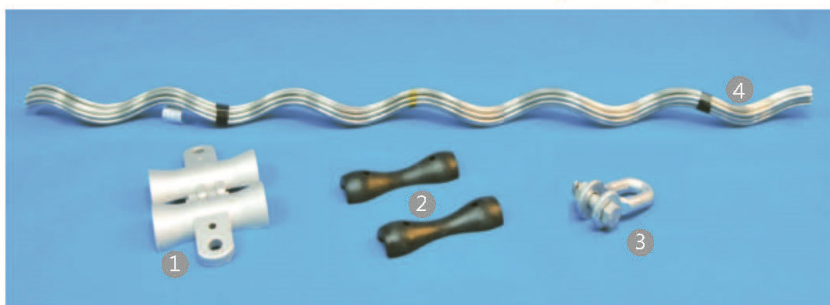
ADSS 光缆用切线线夹主要用于100m 档距内的光缆架设，单层预绞丝悬垂线夹主要用于100m ~ 200m 档距内的光缆架设。

切线线夹通用配件图 (Currency fittings of Tangent set)



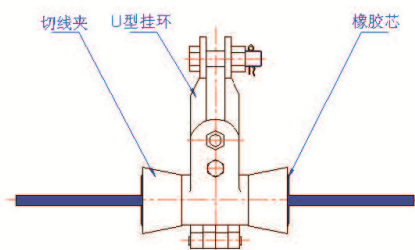
- | | |
|-----------|-----------------|
| 1、悬挂头 | Clamp |
| 2、橡胶衬垫 | Rubber insert |
| 3、U形挂环及螺栓 | U-Clevis & Bolt |

单层预绞丝切线线夹通用配件图 (Currency fittings of single layer preformed rods Tangent set)

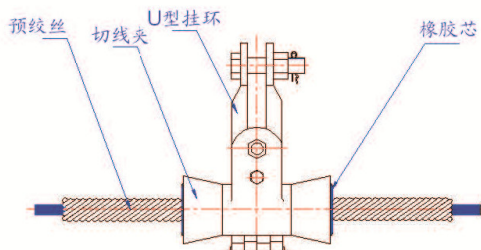


- | | |
|-----------|-----------------|
| 1、悬挂头 | Clamp |
| 2、橡胶垫 | Rubber insert |
| 3、U形挂环及螺栓 | U-Clevis & bolt |
| 4、预绞丝 | Preformed Rods |

产品组装示意图 (Sketch of Assembly)



a) 切线线夹 (Tangent set)



b) 单层预绞丝切线线夹 (single layer preformed rods Tangent set)

产品型号、规格 (Specification)

切线线夹选型表 (Specification of tangent set for ADSS cable)

产品规格 Type	规格 Type	适用缆径 Available Dia. of Cable (mm)	适用档距 Available Dia. of Span (m)
ADSS切线线夹 Tangent Clamp for ADSS	ACQ100/1110	9.0-11.1	100
	ACQ 100/1330	11.2-13.3	100
	ACQ100/1550	13.4-15.5	100
ADSS单层 预绞丝切线线夹 Monolayer Preformed rods Suspension Set for ADSS	ACD200/1010	9.7-10.1	200
	ACD200/1060	10.2-10.6	200
	ACD200/1110	10.7-11.1	200
	ACD200/1160	11.2-11.6	200
	ACD200/1170	11.7-11.7	200
	ACD200/1200	11.8-12.0	200
	ACD200/1270	12.1-12.7	200
	ACD200/1290	12.8-12.9	200
	ACD200/1360	13.0-13.6	200
	ACD200/1410	13.7-14.1	200
	ACD200/1430	14.2-14.3	200
	ACD200/1450	14.4-14.5	200
ACD200/1510	14.6-15.1	200	

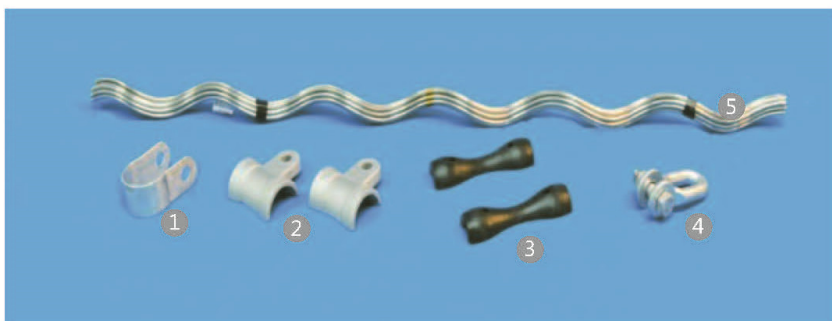
ADSS 光缆用悬垂线夹 (Suspension set for ADSS cable)

产品用途及特点 (Usage and characteristics)

ADSS 光缆用悬垂线夹有单层预绞丝和双层预绞丝两种设计，可根据实际需要选择不同的安装方式。单层预绞丝悬垂线夹用于 200m ~ 400m 内档距的悬挂，双层预绞丝悬垂线夹一般用于大档距（1000m 内）之间的悬挂。

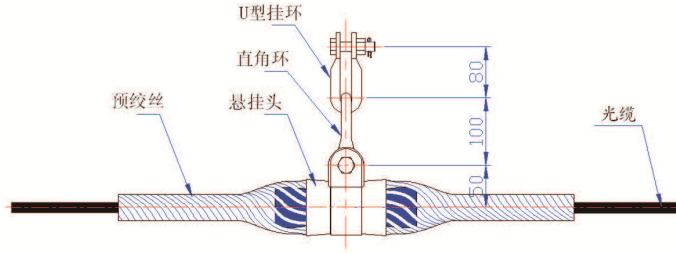
ADSS 光缆悬垂线夹主要由铝合金预绞丝、悬挂头及连接件组成。

单层预绞丝悬垂线夹通用配件图 (Currency fittings of single layer suspension set)



- | | |
|-----------|------------------|
| 1、U型卡 | U-clip |
| 2、悬垂夹 | Suspension Clamp |
| 3、橡胶垫 | Rubber pillow |
| 4、U型挂板和螺栓 | U-Clavis & bolt |
| 5、预绞丝 | Preformed Rods |

产品组装示意图 (Sketch of Assembly for single layer suspension set)



单层预绞丝悬垂线夹 (Single layer suspension set)

单层预绞丝悬垂线夹产品型号规格 (Specification of Single layer Preformed Rods Suspension Set)

ADSS 光缆用单层预绞丝悬垂线夹选型表 (Specification of single layer suspension set for ADSS cable)

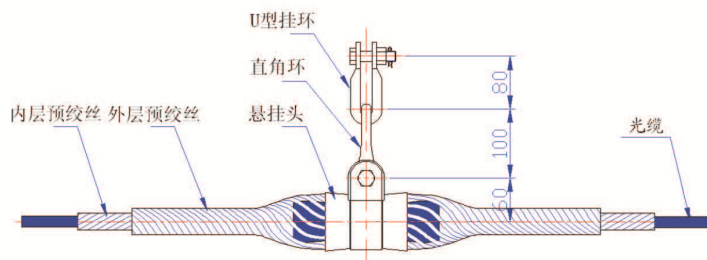
产品规格 Type	适用缆径 Available Dia. of Cable (mm)	预绞丝长度 Length of Preformed Rods (mm)	参考重量 Ref. Weight (kg)	适用档距 Available Dia. of Span (m)
ACLD300/0960	9.0-9.6	1050	0.4	200~300
ACLD300/1010	9.7-10.1	1050	0.4	200~300
ACLD300/1060	10.2-10.6	1050	0.4	200~300
ACLD300/1110	10.7-11.1	1050	0.5	200~300
ACLD300/1160	11.2-11.6	1070	0.5	200~300
ACLD300/1200	11.7-12.0	1080	1.0	200~300
ACLD300/1270	12.1-12.7	1120	1.0	200~300
ACLD300/1290	12.8-12.9	1150	1.1	200~300
ACLD300/1360	13.0-13.6	1170	1.2	200~300
ACLD300/1410	13.7-14.1	1200	1.2	200~300
ACLD300/1430	14.2-14.3	1220	1.3	200~300
ACLD300/1450	14.4-14.5	1250	1.3	200~300
ACLD300/1510	14.6-15.1	1280	1.4	200~300
ACLD400/1200	11.7-12.0	1210	1.1	300~400
ACLD400/1270	12.1-12.7	1250	1.2	300~400
ACLD400/1290	12.8-12.9	1280	1.2	300~400
ACLD400/1360	13.0-13.6	1310	1.3	300~400
ACLD400/1410	13.7-14.1	1350	1.3	300~400
ACLD400/1430	14.2-14.3	1380	1.4	300~400
ACLD400/1450	14.4-14.5	1390	1.5	300~400
ACLD400/1510	14.6-15.1	1420	1.5	300~400

ADSS 光缆双层预绞丝悬垂线夹通用配件图 (Currency fittings of two layers Preformed Suspension Set)



- 1、U型卡 U-clip
- 2、悬挂头 Suspension Clamp
- 3、橡胶垫 Rubber pillow
- 4、U形挂板 U-Clavis
- 5、外层预绞丝 Outer rods
- 6、内层预绞丝 Structural Reinforcing Rods

产品组装示意图 (Sketch of assembly for two layers suspension set)



双层预绞丝悬垂线夹 (Two layers Single point Preformed Suspension Set)

ADSS 光缆预绞丝悬垂线夹产品型号规格 (Specification for two layers preformed Suspension Set)

ADSS 光缆用悬垂线夹选型表 (Specification for two layers preformed Suspension Set)

产品规格 Type	适用缆径 Available Dia. of Cable (mm)	外层长度 Length of outer rods (mm)	内层长度 Length of Reinforcing Rods(mm)	参考重量 Ref. Weight (kg)	色标 Color code	适用档距 Available Dia. of Span (m)
ACL300/0960	9.0-9.6	1040	1600	1.2	蓝BU	200~300
ACL300/1010	9.7-10.1	1040	1600	1.2	绿GR	200~300
ACL300/1060	10.2-10.6	1040	1600	1.2	橙BR	200~300
ACL300/1110	10.7-11.1	1040	1600	1.2	红RE	200~300
ACL300/1160	11.2-11.6	1060	1600	1.3	黑BK	200~300
ACL300/1170	11.7-11.7	1070	1550	1.7	黄YE	200~300
ACL300/1200	11.8-12.0	1150	1670	1.9	紫PU	200~300
ACL300/1270	12.1-12.7	1150	1670	1.9	蓝BU	200~300
ACL300/1290	12.8-12.9	1150	1670	2.0	绿GR	200~300
ACL300/1360	13.0-13.6	1240	1790	2.2	橙BR	200~300
ACL300/1410	13.7-14.1	1240	1790	2.2	红RE	200~300
ACL300/1430	14.2-14.3	1240	1790	2.2	黑BK	200~300
ACL300/1450	14.4-14.5	1240	1790	2.3	黄YE	200~300
ACL300/1510	14.6-15.1	1240	1790	2.4	紫PU	200~300
ACL400/0960	9.0-9.6	1070	1720	1.2	蓝BU	300~400
ACL400/1010	9.7-10.1	1070	1720	1.2	绿GR	300~400
ACL400/1060	10.2-10.6	1070	1720	1.3	橙BR	300~400
ACL400/1110	10.7-11.1	1070	1720	1.3	红RE	300~400
ACL400/1160	11.2-11.6	1090	1720	1.4	黑BK	300~400
ACL400/1170	11.7-11.7	1090	1610	1.8	黄YE	300~400

产品规格 Type	适用缆径 Available Dia. of Cable (mm)	外层长度 Length of outer rods (mm)	内层长度 Length of Reinforcing Rods(mm)	参考重量 Ref. Weight (kg)	色标 Color code	适用档距 Available Dia. of Span (m)
ACL400/1200	11.8-12.0	1210	1710	1.9	紫PU	300~400
ACL400/1270	12.1-12.7	1210	1710	1.9	蓝BU	300~400
ACL400/1290	12.8-12.9	1210	1710	2.1	绿GR	300~400
ACL400/1360	13.0-13.6	1310	1850	2.3	橙BR	300~400
ACL400/1410	13.7-14.1	1310	1850	2.3	红RE	300~400
ACL400/1430	14.2-14.3	1310	1850	2.5	黑BK	300~400
ACL400/1450	14.4-14.5	1310	1850	2.5	黄YE	300~400
ACL400/1510	14.6-15.1	1310	1850	2.5	紫PU	300~400
ACL500/1270	12.1-12.7	1250	1750	2.0	蓝BU	400~500
ACL500/1290	12.8-12.9	1250	1750	2.2	绿GR	400~500
ACL500/1360	13.0-13.6	1310	1870	2.3	橙BR	400~500
ACL500/1410	13.7-14.1	1310	1870	2.3	红RE	400~500
ACL500/1430	14.2-14.3	1310	1870	2.3	黑BK	400~500
ACL500/1450	14.4-14.5	1370	1950	2.5	黄YE	400~500
ACL500/1510	14.6-15.1	1370	1950	2.6	紫PU	400~500
ACL500/1580	15.2-15.8	1370	1950	2.6	蓝BU	400~500
ACL500/1600	15.9-16.0	1430	2050	2.9	绿GR	400~500
ACL500/1690	16.1-16.9	1430	2050	2.9	橙BR	400~500
ACL600/1270	12.1-12.7	1310	1810	2.0	蓝BU	500~600
ACL600/1290	12.8-12.9	1310	1810	2.2	绿GR	500~600
ACL600/1360	13.0-13.6	1370	1930	2.3	橙BR	500~600
ACL600/1410	13.7-14.1	1370	1930	2.4	红RE	500~600
ACL600/1430	14.2-14.3	1370	1930	2.6	黑BK	500~600
ACL600/1450	14.4-14.5	1410	2050	2.6	黄YE	500~600
ACL600/1510	14.6-15.1	1410	2050	2.6	紫PU	500~600
ACL600/1580	15.2-15.8	1410	2050	2.6	蓝BU	500~600
ACL600/1600	15.9-16.0	1520	2130	2.9	绿GR	500~600
ACL600/1690	16.1-16.9	1520	2130	2.9	橙BR	500~600
ACL800/1430	14.2-14.3	1470	2080	2.7	黑BK	700~800
ACL800/1450	14.4-14.5	1470	2130	2.8	黄YE	700~800
ACL800/1510	14.6-15.1	1470	2130	2.8	紫PU	700~800
ACL800/1580	15.2-15.8	1470	2130	2.8	蓝BU	700~800
ACL800/1600	15.9-16.0	1570	2210	3.0	绿GR	700~800
ACL800/1690	16.1-16.9	1570	2210	3.0	橙GR	700~800
ACL800/1730	17.0-17.3	1570	2210	3.3	红RE	700~800
ACL800/1800	17.4-18.0	1570	2210	3.3	黑BK	700~800
ACL1000/1580	15.2-15.8	1560	2350	3.0	蓝BU	900~1000
ACL1000/1600	15.9-16.0	1680	2600	3.4	绿GR	900~1000
ACL1000/1690	16.1-16.9	1680	2600	3.4	橙BR	900~1000
ACL1000/1730	17.0-17.3	1680	2600	3.6	红RE	900~1000
ACL1000/1800	17.4-18.0	1680	2600	3.6	黑BK	900~1000
ACL1000/1880	18.1-18.8	1680	2600	4.7	黄YE	900~1000

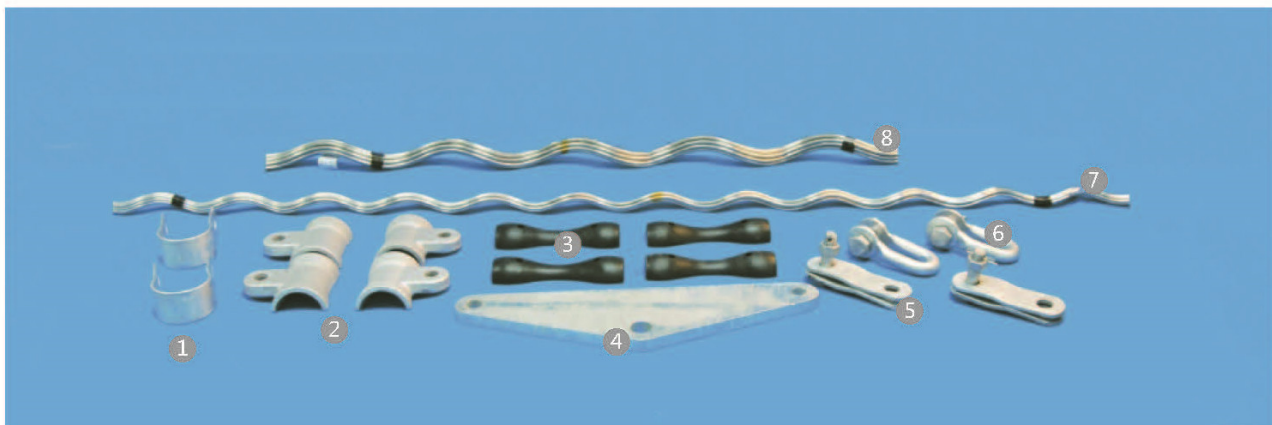
ADSS光缆用双悬垂线夹 (Double points Suspension Set for ADSS cable)

产品用途及特点 (Usage and characteristics)

ADSS光缆双悬垂线夹主要用于光缆在高落差, 以及档距大于800米或线路角度小于 30° 时的直线塔的悬挂和支撑。

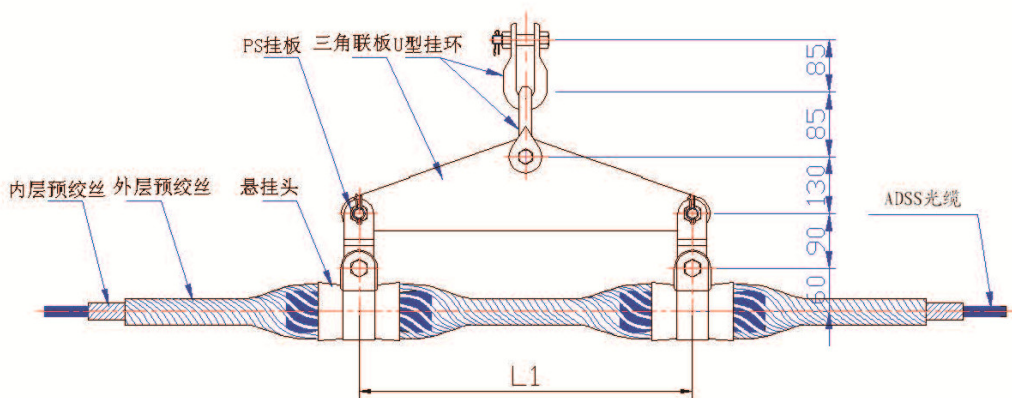
Double Points Suspension Set for ADSS is mainly used for large height difference, span more than 800 meters or unilateral overhang angle is less than 30° line tower connection.

通用配件图 (Currency fittings)



- | | |
|---------------------|-------------------------------------|
| 1、U型卡 U-clip | 5、PS挂板 PS-Link |
| 2、悬挂头 Clamp | 6、U形挂板 U-Links |
| 3、橡胶垫 Rubber pillow | 7、外层预绞丝 Outer rods |
| 4、三角挂板 | 8、内层预绞丝 Structural Reinforcing Rods |

产品组装示意图 (Sketch of assembly for two layers Double-points suspension set)



预绞丝双悬垂线夹

(Assembly for two layers Double-points suspension set)

产品型号规格 (Specification)

ADSS 光缆用双悬垂线夹选型表 (Specification of Double-points suspension set for ADSS cable)

产品规格 Type	适用缆径 Available Dia. of Cable (mm)	外层长度 Length of outer rods (mm)	内层长度 Length of Reinforcing Rods(mm)	色标 Color code	参考重量 Ref. Weight (kg)
ACLS 0960	9.0-9.6	1810	2210	蓝BU	1.9
ACLS 1010	9.7-10.1	1810	2210	绿GR	1.9
ACLS 1060	10.2-10.6	1810	2210	橙BR	1.9
ACLS 1110	10.7-11.1	1810	2210	红RE	1.9
ACLS 1160	11.2-11.6	1810	2210	黑BK	2.0
ACLS 1170	11.7-11.7	1810	2210	黄YE	2.7
ACLS 1200	11.8-12.0	1910	2410	紫PU	2.9
ACLS 1270	12.1-12.7	1910	2410	蓝BU	2.9
ACLS 1290	12.8-12.9	1910	2410	绿GR	3.2
ACLS 1360	13.0-13.6	1910	2410	橙BR	3.2
ACLS 1410	13.7-14.1	2110	2710	红RE	3.5
ACLS 1430	14.2-14.3	2110	2710	黑BK	3.8
ACLS 1450	14.4-14.5	2110	2710	黄YE	3.8
ACLS 1510	14.6-15.1	2110	2710	紫PU	3.8
ACLS 1580	15.2-15.8	2110	2710	蓝BU	3.8
ACLS 1600	15.9-16.0	2110	2710	绿GR	3.9
ACLS 1690	16.1-16.9	2410	3010	橙BR	4.4
ACLS 1730	17.0-17.3	2410	3010	红RE	4.8
ACLS 1800	17.4-18.0	2410	3010	黑BK	4.8
ACLS 1880	18.1-18.8	2410	3010	黄YE	6.3